



Utility Grade Pico Hydro

M300: Off Grid Low Voltage Power Generation

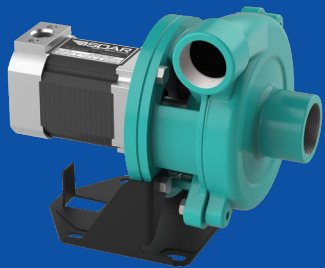
Canyon Hydro's M300 Pico Hydro Turbines generate electricity at otherwise unpowered water system locations. Power generated is commonly used to run SCADA systems, control valve operations, operate radios and provide lighting.

The Pico Hydro system is installed parallel to a Pressure Reducing Valve (PRV) generating power by passing a small amount of flow through the turbine. The included charge control supplies a battery bank with power, monitoring charge status and modulating output as needed. In times of zero power draw the M300 system fully shuts down until power demand resumes.

Solutions are available for sites with pressure differentials from 15 to 73 PSI and power output is up to 300 Watts of 12 or 24 Volt DC power.



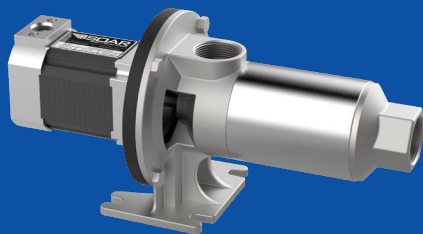
Low Head Turbine



M300-30

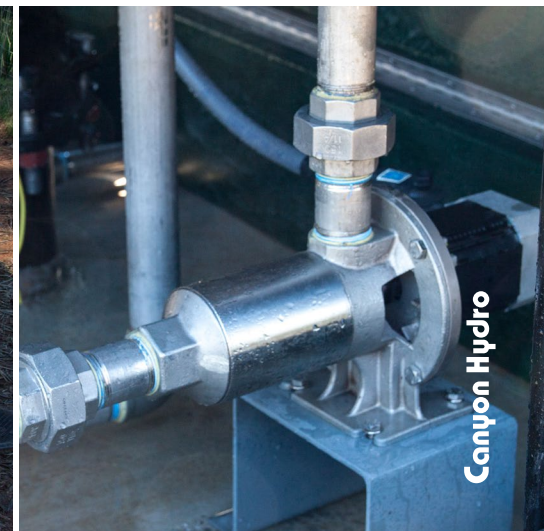
15-32 PSI Net Head

High Head Turbine



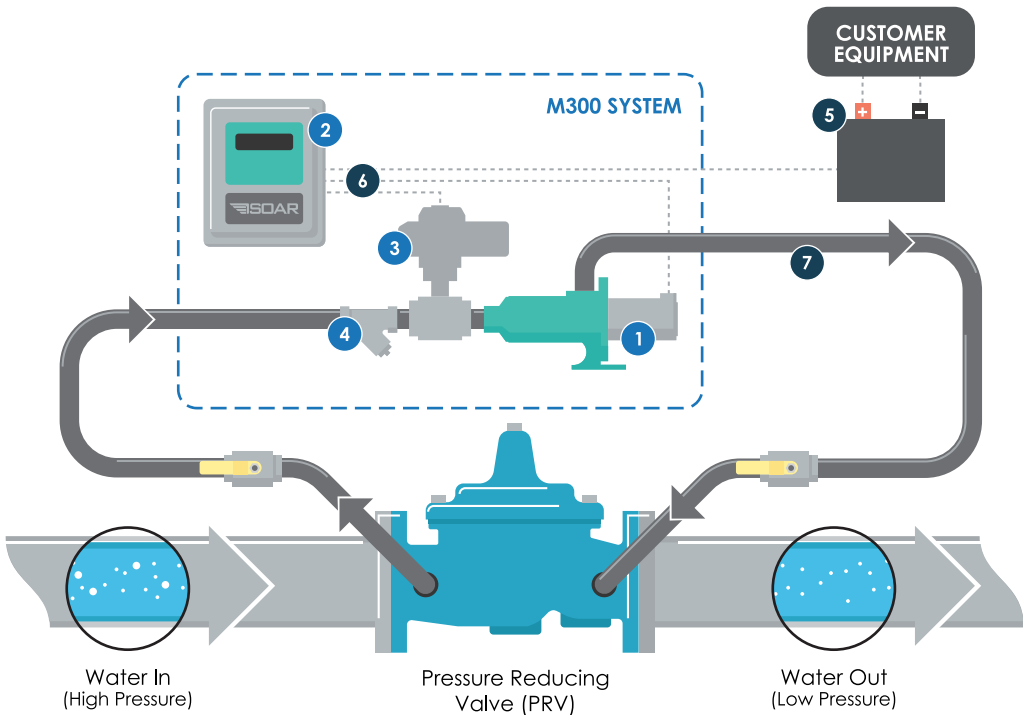
M300-60

27-73 PSI Net Head



Typical System Configuration

The M300 system includes all components needed to generate power and supply a battery bank with electricity. Turbine, inlet valve, and strainer all come with standard NPT pipe threads for ease of installation.



Included Components

- 1 Turbine/Generator
- 2 Charge Controller
- 3 Modulating Inlet Valve
- 4 Y-Strainer

Customer Supplied

- 5 12/24V Battery Bank
- 6 Field Wiring
- 7 Piping (2" Dia.)

1-360-592-5552
info@canyonhydro.com

5500 Blue Heron Ln., Deming, WA 98244 USA

