

Inline Hydro Turbine

Inline Series, ILT-XX

4" - 24" Pipe Sizes

25 - 570 Feet Head

100 - 30,000 GPM Flow Rates

Soar's Inline Turbines are a series of compact, highly efficient hydro power generation units. These turbines are site specific for maximum efficiency but share a number of common parts for competitive pricing and quick lead times. Designed specifically for conduit power recovery, the ILTs are available for standard pipe sizes from 4 to 24 inches.

The Francis turbine covers flows ranging from 100 to 30,000GPM and heads from 25 to 570 feet. Flange-to-flange lengths of Inline Turbines are shared with common pressure reducing valves for drop-in replacement and the flanges are manufactured to meet ANSI standards. Adjustable wicket gates maintain efficiency over a wide flow range to maximize power recovery and with a low maintenance design the unit is a viable economic choice.

Packaged systems are available with all necessary components from generation to power grid connectivity.

*Manufactured and assembled in the USA
Patent Pending*



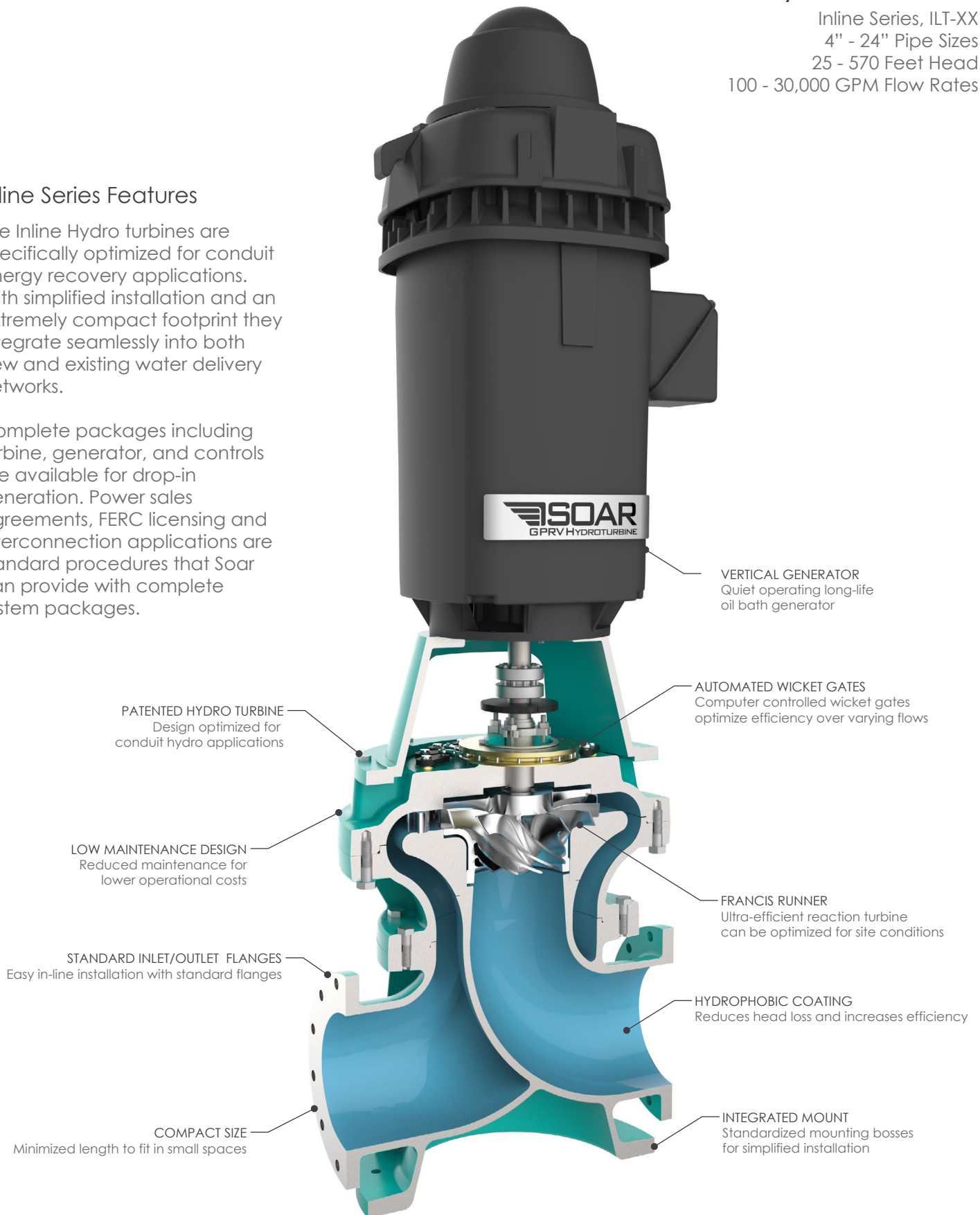
Inline Hydro Turbine

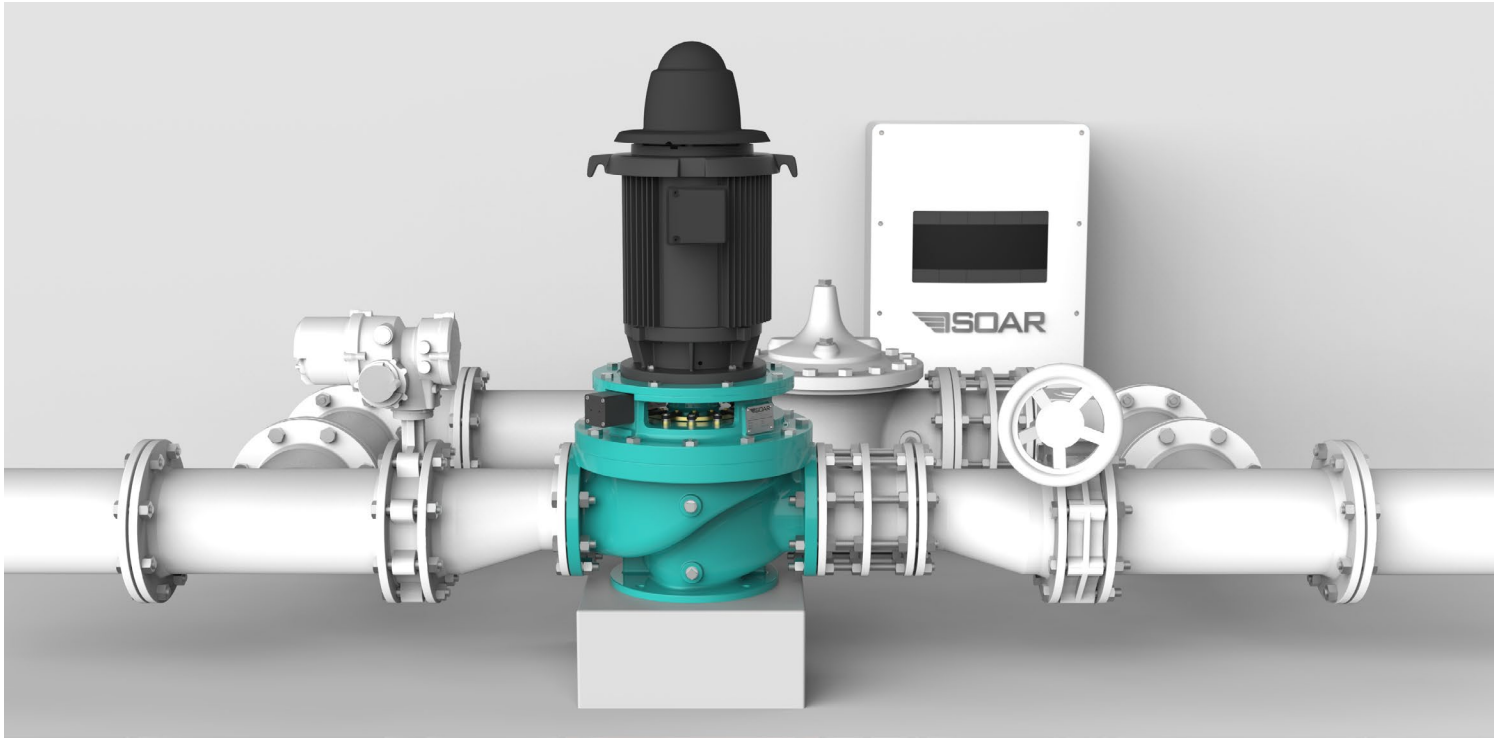
Inline Series, ILT-XX
 4" - 24" Pipe Sizes
 25 - 570 Feet Head
 100 - 30,000 GPM Flow Rates

Inline Series Features

The Inline Hydro turbines are specifically optimized for conduit energy recovery applications. With simplified installation and an extremely compact footprint they integrate seamlessly into both new and existing water delivery networks.

Complete packages including turbine, generator, and controls are available for drop-in generation. Power sales agreements, FERC licensing and interconnection applications are standard procedures that Soar can provide with complete system packages.





Inline Series Specifications

The Inline Series Turbines utilize the same nominal flange size for both inlet and discharge flanges. Typical flanges are manufactured to meet ANSI standards and other standards can be used upon request. The flange-to-flange length of the Inline turbines is standard by size but the overall height can change based on site and generator requirements. Sizing, head, and flow ranges listed for each model are for reference only as exact specifications are site specific. For detailed sizing and application support contact Soar directly.

Imperial Turbines	ILT-04	ILT-06	ILT-08	ILT-12	ILT-16	ILT-20	ILT-24
Pipe Diameter	4"	6"	8"	12"	16"	20"	24"
Pressure Rating (PSI)	250	250	250	250	250	250	250
Min Flow (GPM)	150	500	800	1,800	4,400	6,700	9,900
Max Flow (GPM)	600	1,400	2,400	7,600	12,500	19,600	25,200
Overall Length	15.00"	20.00"	25.38"	34.00"	41.38"	52.0"	61.5"

Metric Turbines	ILT-100	ILT-150	ILT-200	ILT-300	ILT-400	ILT-500	ILT-600
Pipe Diameter	100mm	150mm	200mm	300mm	400mm	500mm	600mm
Pressure Rating (Bar)	16	16	16	16	16	16	16
Min Flow (M ³ /H)	25	100	175	400	1,000	1,500	2,250
Max Flow (M ³ /H)	150	225	550	1,725	2,850	4,500	5,725
Overall Length	381mm	508mm	645mm	864mm	1,051mm	1,321mm	1,562mm